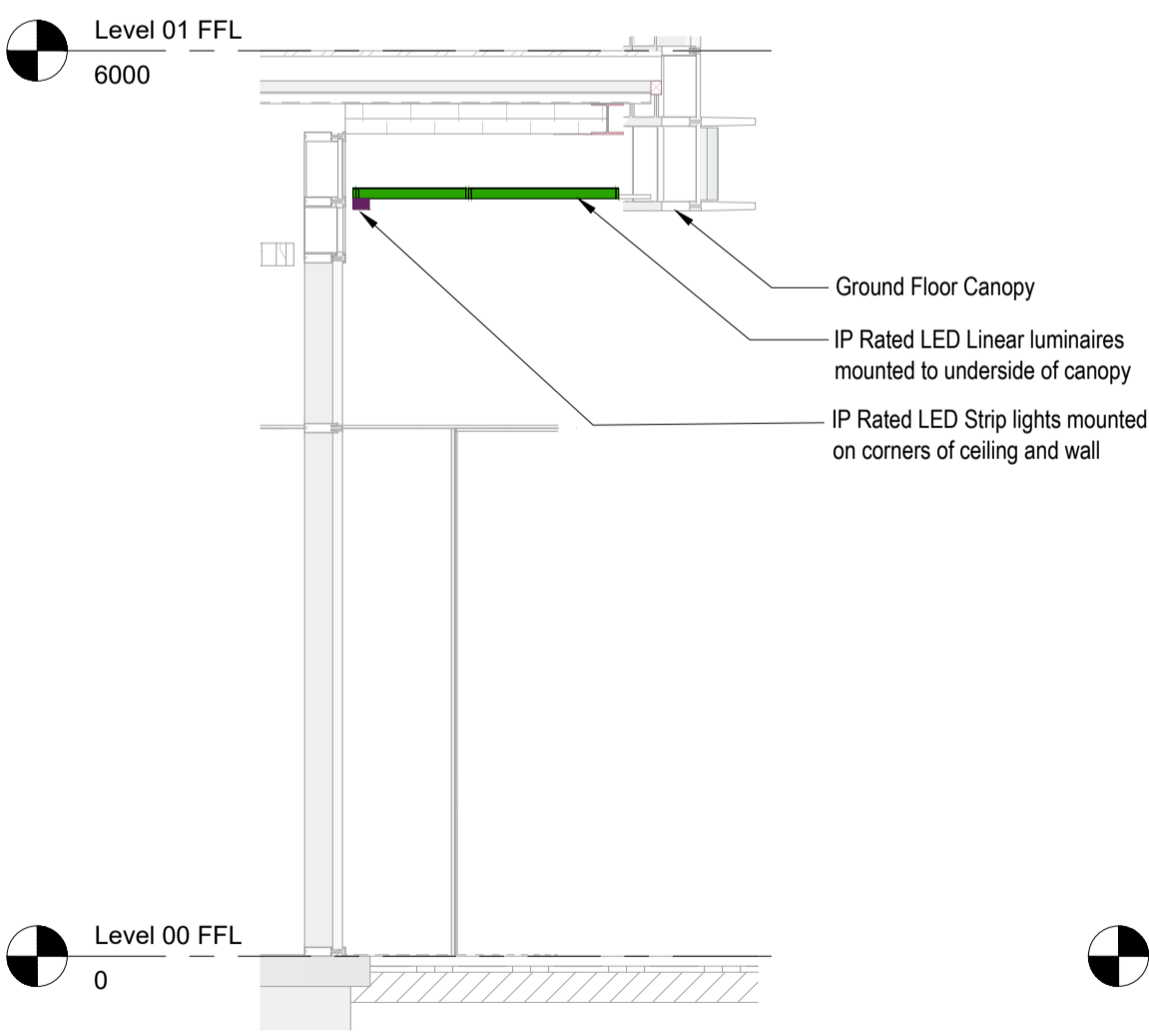
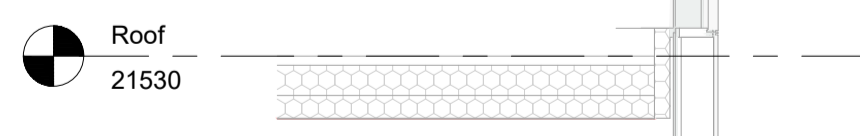


1 Detail - External Lighting Control Schematic
NTS

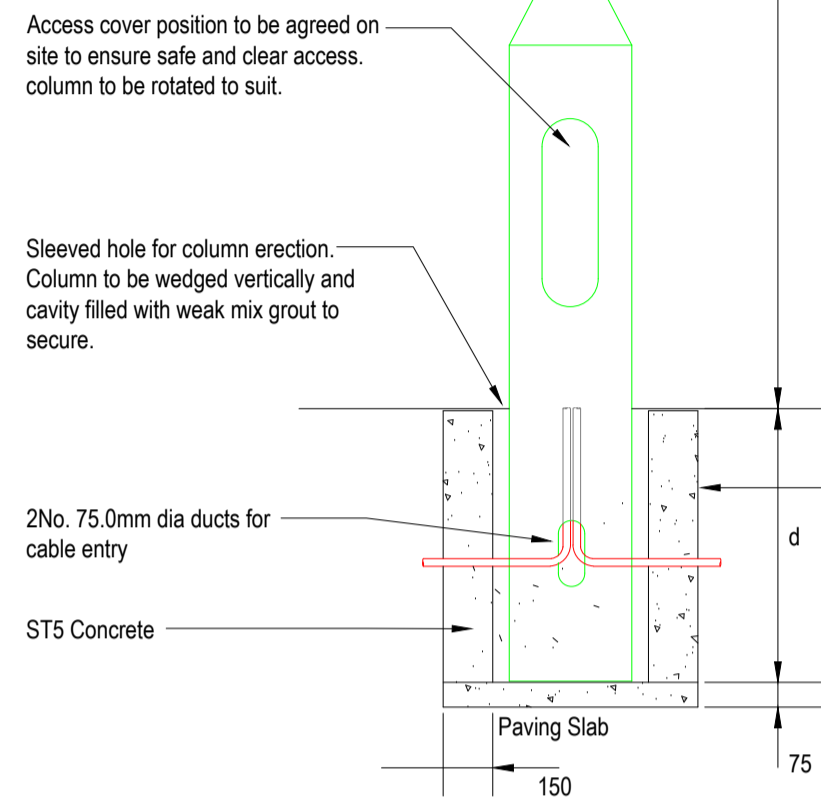


A Section - Canopy
1:50



B Section - Roof Parapet
1:50

COLUMN HEIGHT (h)	DEPTH (d)
5.0m	0.8m
6.0m	1.0m
8.0m	1.2m
10.0m	1.5m
12.0m	1.7m



2 Detail - External Lighting Column Detail
NTS

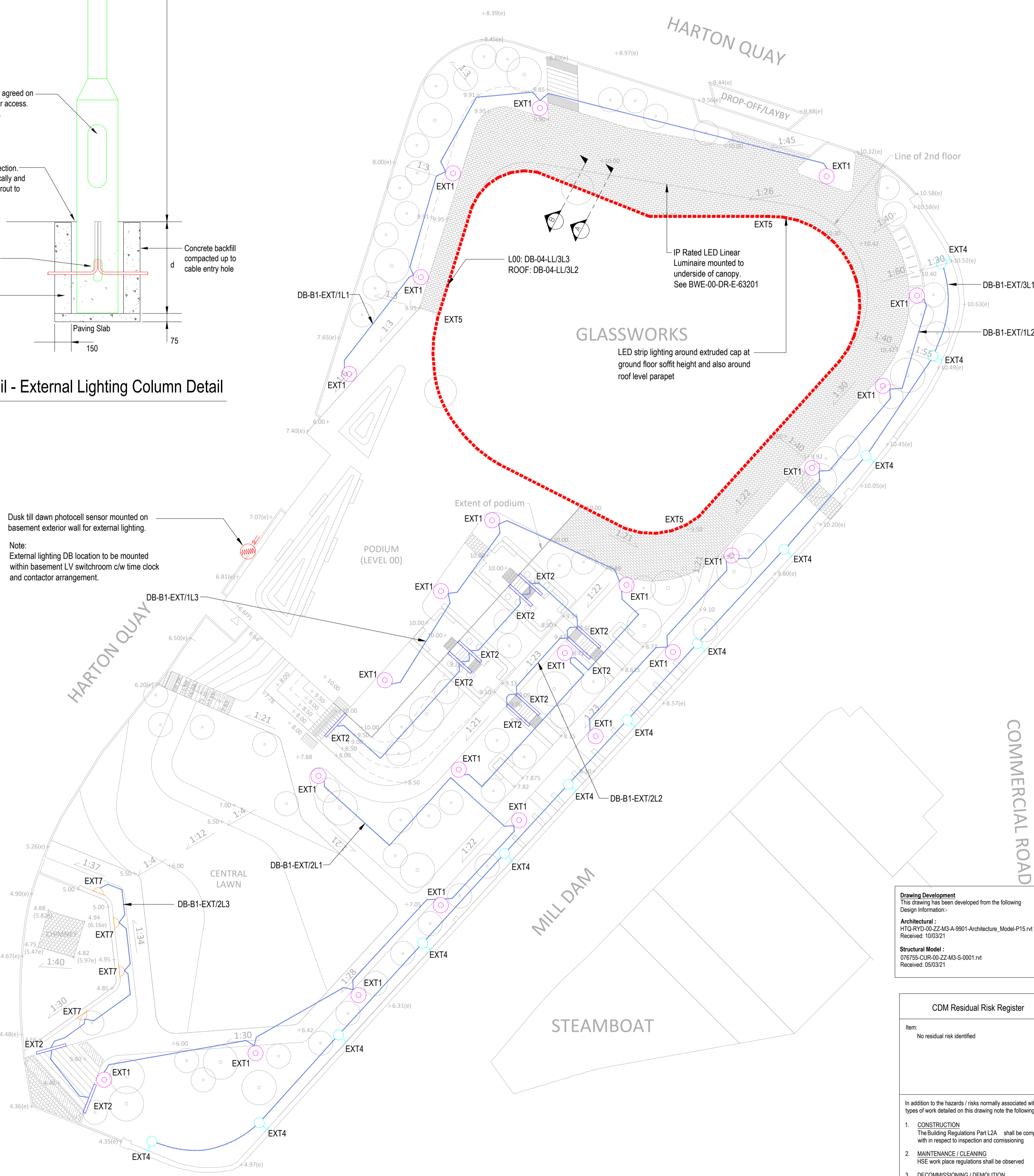
Notes

Columns to be erected vertically, lanterns to be fitted separately

Columns to present a uniform alignment when erected

ST5 concrete mix to have a maximum water to cement ratio of 0.60 (refer to BS 5328)

Columns to be complete with 18.0mm thick exterior grade ply backboard, treated with a clear water repellent



Drawing Development
This drawing has been developed from the following Design Information:-
Architectural: HTD-R10-00-ZZ-M3-A-9901-Architecture_Model P15.rvt
Received: 10/03/21
Structural Model: 076755-CUR-00-ZZ-M3-S-0001.rvt
Received: 05/03/21

CDM Residual Risk Register	
Item:	No residual risk identified

In addition to the hazards / risks normally associated with the types of work detailed on this drawing note the following:-

- CONSTRUCTION**
The Building Regulations Part L2A shall be complied with in respect to inspection and commissioning
- MAINTENANCE / CLEANING**
HSE work place regulations shall be observed
- DECOMMISSIONING / DEMOLITION**
WEE and ROHS regulations shall be complied with

N.B. It is assumed that all work will be carried out by a competent contractor working, where appropriate, to an approved method statement

- General Notes**
- This drawing has been checked in accordance with Black & White Engineering (B&W) QA checking procedures.
 - Do not scale from this drawing. All dimensions indicated are in millimeters unless otherwise stated. Validate all measurements on site.
 - All plant and equipment dimensions are typical. The Contractor should show actual, approved plant and equipment sizes.
 - This drawing is to be read in conjunction with all relevant B&W MEP specifications, schedules and standard key to symbols sheet.
 - Any discrepancies between the drawings and other documents should be brought to the attention of the engineer.
 - This drawing is not an installation drawing. It is the Contractor's responsibility to make final coordinated installation shop drawings.
 - Final ceiling coordination subject to interior design package.
 - Contractor to coordinate final distribution routes with available sleeves and openings in beams / structure.
 - The contents of this drawing shall be read in conjunction with the current revisions of other relevant Architectural, Structural, Mechanical and Electrical drawings and all relevant sections of the specifications.

- Notes:**
- The luminaires indicated on this drawing shall be used for indicative information purposes and shall not be used for pricing or quantities.
 - The final location and quantities of all external luminaires shall be confirmed subject to Stage 4 - Detailed Design.
 - Lighting controls to be via automatic time clock and photocell arrangement c/w manual override.

- Legend**
- EXT1 6m Lighting Column, IP66, 140Lm/W, c/w 4000K LED. As per DW Windsor Milano Halo Catalogue.
 - EXT2 900mm, 521Lm, 10.8w LED handrail luminaire. As per DW Windsor Z Garda Handrail Catalogue.
 - EXT3 Uplight Luminaire
 - EXT4 5w, 300Lm, IP67, c/w 4000K LED, wall washer LED luminaire. As per Urbis Schreder Catalogue.
 - EXT5 Continuous LED strip, IP54, 9w/m, c/w 3000K LED, mounting track connections, endcaps, PSUS and dimming modules to form a complete system.
 - EXT6 5.7w, 10Lm, 4000K, IP68, floor mounted stainless steel 316. As per Collingwood Lighting Catalogue.
 - EXT7 24w, 1890Lm, IP65, c/w 4000K LED. As per Bega Lighting Catalogue.
 - Dusk till dawn photocell sensor.

P01	Stage 4 - Issued for Costing	TKK / JOB / GRW	15 / 03 / 21
Rev	Details	By / Chkd / App	Date

Client
Muse Developments

Project Title
Harton Quay

Drawing Title
External Lighting Layout Site Wide

Project Status
STAGE 4

Discipline	Subability
Electrical Services	D1

Project Number: P20102 | Scale @ A1: 1:250 | Revision: P01

Project - Originator - Volume - Level - Type - Role - Number
P20102-BWE-XX-ZZ-DR-E-63211